



WINDOW SURVEY AT 1-2 & 3-4 LIVESEY STREET, TESTON, KENT

1. SWAT Archaeology Partnership has been instructed by the owners of the above properties to carry out a full investigation of all the windows and provide a detailed written condition report based on the survey findings.
2. The report is to identify the existing material and defects and the report is to give options on improvements as follows:
 - a. Retain windows and carry out necessary repairs and external redecorations.
 - b. Renew windows like for like in hardwood
3. All window openings on the building have been assigned a number and described and windows in pairs or groupings have been assigned separate numbers whilst windows in dormers and small fixed windows have been included but not sidelights or transoms associated with a door.
4. The survey shows that all windows are suffering from varying degrees of wet rot where leaking roofs, defective guttering have allowed damp to affect the timber windows.
5. An examination of all windows has identified no heritage assets associated with the windows that would require architectural recording of the windows. However it is recommended that window replacement is like for like and based on the original window construction and to detailed drawing approved by the local planning authority.
6. Site Survey and Report was undertaken and prepared by Dr Paul Wilkinson MCIfA, FRSA, IHBC and dated 15th July 2019.



WINDOWS SOUTH ELEVATION

ITEM	WINDOW CONDITION	REPAIR OR REPLACE
Window 1 (Plate 2)	Cill, bottom rail, left jamb rotted	Replace
Window 2 (Plate 2)	Cill, bottom rail, right and left jamb rotted	Replace
Window 3 (Plates 2, 4)	Cill rotted	Replace
Window 4 (Plates 2, 6)	Poor replacement cill, left mullion rotted	Replace
Window 5 (Plate 1)	Cill and right jamb rotted	Replace
Window 6 (Plate 1)	Cill rotted	Replace

Window 7 (Plate 1)	Cill rotted	Replace
Window 8 (Plates 1, 5)	Cill, right and left bottom rail rotted	Replace
Window 9 (Plate 3)	Cill, left and right bottom rotted	Replace



Plate 1. South elevation with Windows 5, 6, 7, 8, 9



Plate 2. South elevation with Windows 1, 2, 3, 4



Plate 3. Window 9



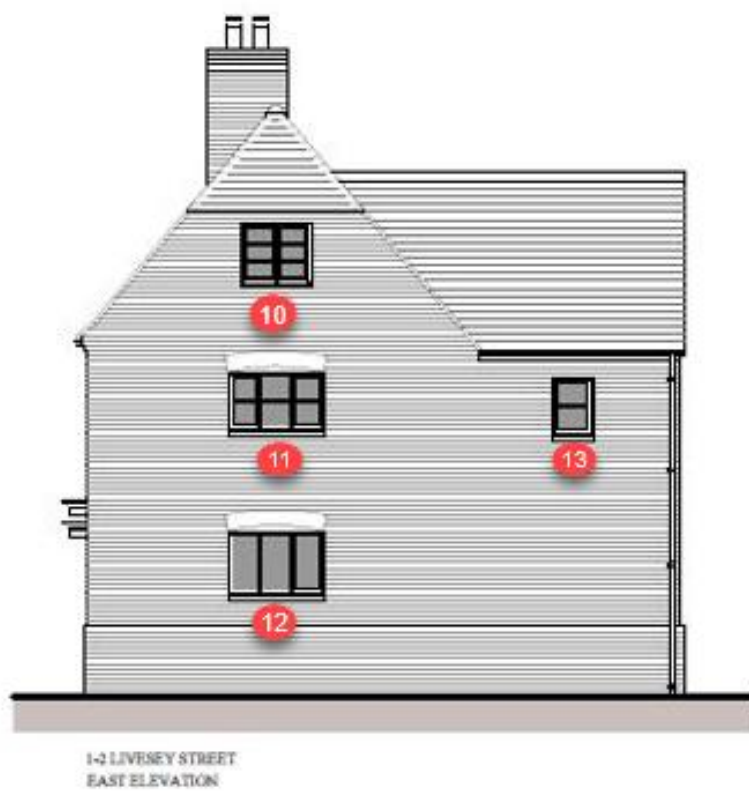
Plate 4. Window 3



Plate 5. Window 8



Plate 6. Window 4



WINDOWS EAST ELEVATION

ITEM	WINDOW CONDITION	REPAIR OR REPLACE
Window 10 (Plate 7)	Cill, bottom rail, left jamb rotted	Replace
Window 11 (Plates 7, 9)	Cill and bottom rail rotted	Replace
Window 12 (Plate 7)	Cill, bottom rail, right and left jamb rotted	Replace
Window 13 (Plates 7, 8)	Bottom rail rotted	Replace



Plate 7. Windows east elevation



Plate 8. Window 13



Plate 9. Window 11



WINDOWS NORTH ELEVATION

ITEM	WINDOW CONDITION	REPAIR OR REPLACE
Window 14 (Plates 10, 15)	Cill, bottom rail, left jamb rotted	Replace
Window 15 (Plates 10, 12)	Cill, bottom rail, right and left frame rotted	Replace
Window 16 (Plate 10)	Cill, bottom rail, right and left jamb rotted	Replace
Window 17 (Plate 10)	Cill, bottom rail, right and left jamb rotted	Replace
Window 18 (Plates 10, 11)	Cill rotted	Replace

ITEM	WINDOW CONDITION	REPAIR OR REPLACE
Window 19 (Plates 10, 13)	Cill, bottom rail, left jamb rotted	Replace
Window 20 (Plates 10, 13)	Cill and bottom rail rotted	Replace
Window 21 (Plates 10, 13)	Cill rotted	Replace
Window 22 (Plates 10, 14)	Cill, right jamb rotted	Replace
Window 23 (Plates 10, 14)	Cill rotted	Replace



Plate 10. North elevation



Plate 11. Window 18



Plate 12. Window 15



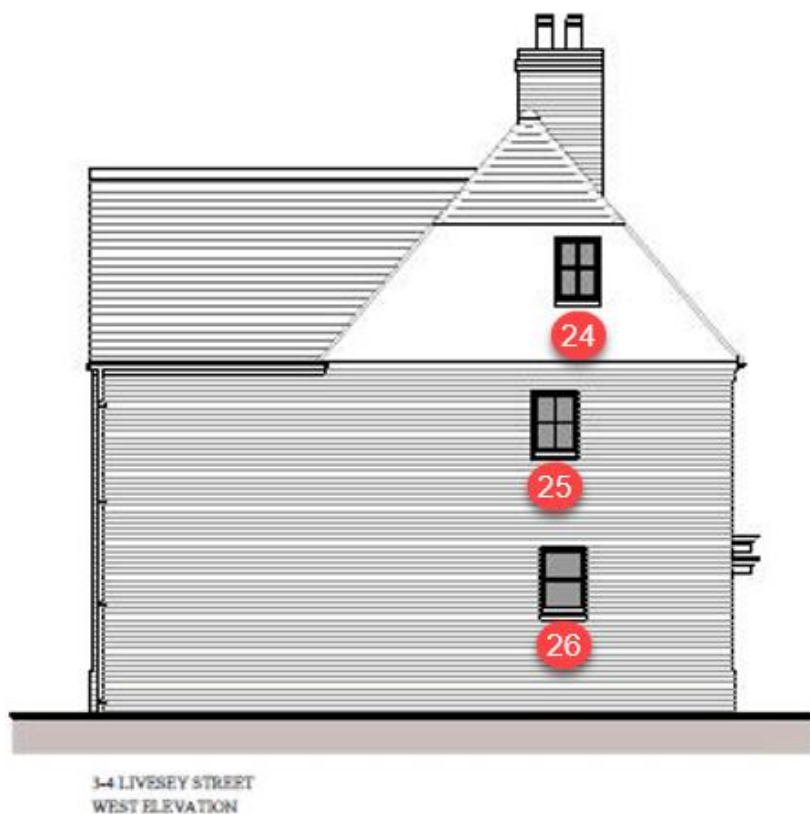
Plate13. Windows 19, 20, 21



Plate 14. Windows 22, 23



Plate 15. Window 14



A

WEST ELEVATION

ITEM	WINDOW CONDITION	REPAIR OR REPLACE
Window 24 (Plate 16)	Cill, bottom rail, left jamb rotted	Replace
Window 25 (Plate 16)	Cill, bottom rail, right and left jamb rotted	Replace
Window 26 (Plate 16)	Cill, bottom rail, right and left frame rotted	Replace



Plate 16. West elevation windows 24, 25, 26